



LDR0906CB PRINTED WITH SOY INK This document is printed on chlorine-free (ECF) paper with soy ink.



Absolute Series

Yamaha Hand Crafted Drums

High Quality × Customization

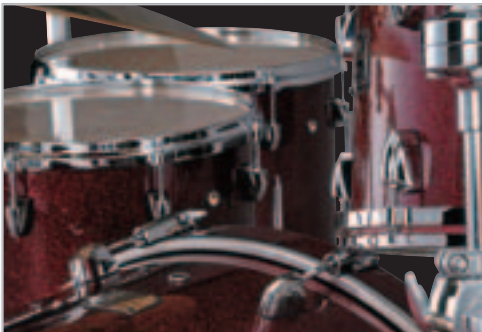
Let's begin with a question: What would your ideal drum kit be like? We could put that question to a hundred drummers, and we'd certainly get a hundred different answers. They'd all talk about the tone, buildup, clarity and stick rebound, but each drummer has his or her own tastes and preferences. Even the shell color would be important.

With YAMAHA's Absolute Series you can create the ideal drum kit by choosing your favorite elements from our highest-quality materials and components.

So, why play just anybody's drum kit when you could have your very own "dream kit"?



Woods



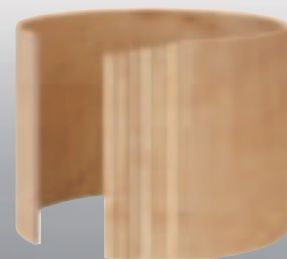
Maple

Carefully selected maple material is used. It offers rich, warm tone and abundant sustain. This material is loved by drummers the world over, and is heard in every musical genre imaginable.

Birch

We use the finest Hokkaido-grown birch material, and it's noted for a fine grain and attractive gloss. Although birch is hard, it has excellent workability. Drummers love its outstanding ability to carry the middle to low tones, as well as its sharp but solid response in the upper register. Birch material is also used for the Recording Custom, which can be considered the foundation of YAMAHA's system drum.

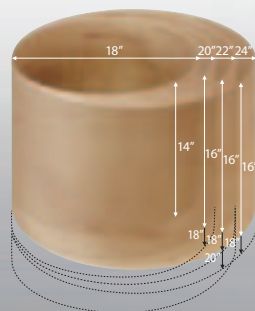
Both the maple and birch shells are available in the seven-ply (BD) and six-ply (FT, TT, SD) specifications. Excellent durability is achieved with the use of premium materials, and through the combination of the air sealing system and YAMAHA's advanced woodworking technologies. The Absolute Series produces a well-balanced rumble. You can choose from a variety of sizes from an 8-inch tom-tom to a 24-inch bass drum.



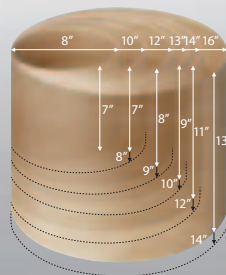
7ply(BD)



6ply(TT FT SD)



BD



TT



Maple x Birch Custom Absolute (Burgundy Sparkle)

■ Shells MAB2220R BAF1615 BAF1413 BAT1208 ■ Snare Drum NSD1455 ■ Hardware FP9500C2 HS1200D CH750 CH755x4 CSBW SS950 DS840 CL945B ■ Additional SKRM100 ■ Rack HXCP44x4 HXCP36 HXCP23x2 HXTL33x3 HXTL23 HXDB HXBCx5 HXOCx3 HXCCx4 HXLCx2

Absolute Lug or Hook Lug

Absolute Lug

Our complete specifications are passed on to succeeding model lines, generation after generation. The already well-known "Absolute Lug," for instance, can be firmly secured with a single bolt. It's a complete secure lug that doesn't interfere with vibrations of the shell. The insertion plate, which is located within the lug case, and the nylon ring at the lower part of the lug nut control the slackening of the tuning bolt, providing the utmost in tuning stability.

Lug Nut
Nylon Ring
Lug Nut Holding Plate

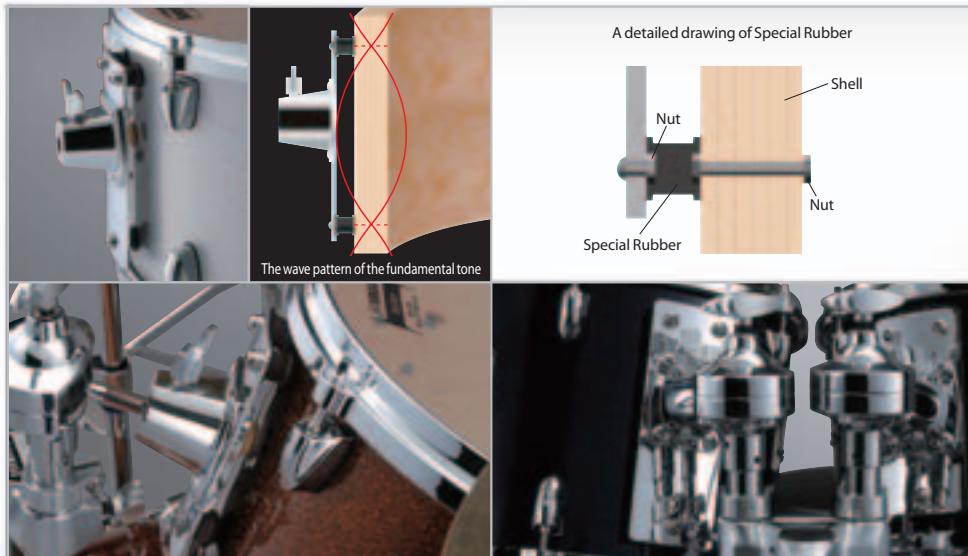
Hook Lug (Option)

The Hook Lug has been redesigned by thoroughly improving our innovative hook-type Nouveau Lug (used in the conventional Absolute Series) in every aspect. At the same time, the greatness of the lug's basic concept has been maintained. It can be said that the Hook Lug is truly a next-generation lug that transcends conventional lugs with its acoustical effect and tuning stability, as well as with the sturdiness needed for high-tension tuning and the way it facilitates quick head replacement. As with the Absolute Lug, the insertion plate and nylon ring within the lug nut control the slackening of the tuning bolt.

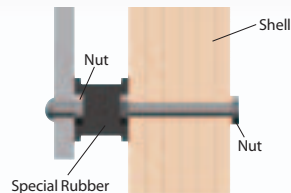


Birch Custom Absolute (White Grape Sparkle)
Shells BAB2218HR BAT1412H BAT1411H BAT1209H BAT1008H BAT0807H **Snare Drum** MSD1365 **Hardware** DFP9500D HS1200T CH750x2 CH755x4 CSBW CHH930 SS950 DS840 **Additional** DTXT3 TP100x3
Rack HXCP44x5 HXCP24 HXTL23 HXTL33x3 HXTCx7 HXLRx8 HXBCx4 HXCCx4 HXDBx2 HXOCx2 HXACx4 HXLCx3

YESS II-m



A detailed drawing of Special Rubber



The wave pattern of the fundamental tone

Y.E.S.S. II is an improved version of YAMAHA's original tom mount, known as the Y.E.S.S. (Yamaha Enhanced Sustain System). Its unique design, which minimizes interference with the shell's natural response—which some call the "rumble"—has been adopted for the PHX Series and is highly praised by pro players worldwide. The Y.E.S.S. II-m model, which uses a metal plate instead of the wood plate found in the Y.E.S.S., has been adopted for the Absolute Series, producing even longer sustain.

In the Y.E.S.S. II-m mount system, the number of supported points (rubber spacers) is adjusted according to the size of the tom. For example, the number of supported points is minimal for a lightweight tom. For a heavyweight tom, rubber spacers, ranging in diameter from small to large, are carefully selected and distributed in order to modulate the rumbling caused by the weight of the drum. This results in clear response and well-balanced rumble from one drum to the next.



Maple Custom Absolute (Caramel Sparkle)

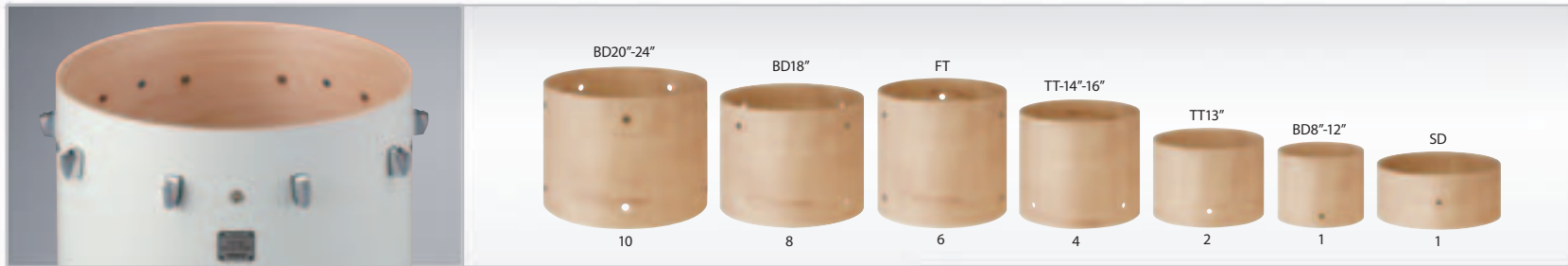
■ Shells MAB1814 MAF1413 MAT1208 ■ Snare Drum VSD1460 ■ hardware FP8500B HS740A CS650A CS655A2 SS740A DS840 TH904A CL945B



Maple Custom Absolute (Solid Silver)

■ **Shells** MAB2220Rx2 MAF1816 MAF1615 MAT1310 MAT1209 ■ **Snare Drum** MAS1470
■ **Hardware** FP9500Cx2 HS1200D CH750x2 CH755x6 CSBW CHH930 SS950 DS840
■ **Additional** DTXT3 TP100 ■ **Rack** HXCP44x6 HXCP36x3 HXCP23x3 HXTL33x5
HXDBx3 HXTCx3 HXBCx4 HXOCx6 HXACx2 HXLRx3 HXLCx2 HXCCx4

Vent Hole



The vent hole plays an important role in performance, since it affects not only the sensation of hitting the drum (the impact) but also the initial sound, sustain and tone. Through an exhaustive series of prototypes, YAMAHA has discovered the optimal number and vent hole position depending on the air capacity of each shell. Particularly, vent holes contribute to the enhancement of tone colors in midrange to low-frequency sounds, as well as the control of sustain.



Maple Custom Absolute (Midnight Sky Blue)
 ■ Shells MAB2218Hx2 ■ Snare Drum MAS1440 ■ Hardware FP9500Cx2 HS1200D CS855x4 CH755x2 CH750 SS950 SS740A DS840 WS950Ax4 TH940Bx2 ■ Additional DTXT3 DTXP4 TP120SD TP100x5 TP65x6 PCY155x2 PCY135x4 PCY65 RHH135 ■ Rack HXCP23 HXBCx2

Tom Mounted BD or R-Version BD



Tom-Mounted BD

This type is equipped with YAMAHA's traditional tom-mount base. Because various holders such as a tom holder and a cymbal holder can be mounted onto the basic 22.2mm caliber, you can enjoy a variety of settings and configurations.



R-Version BD

Our constant quest for the ultimate in bass-drum performance has produced a new design, in which a tom-mount base has been eliminated from the upper part of the drum. The more powerful, direct sound that results will forever change the perception of what a bass drum can and should be. Moreover, the new design is very compatible with HEXRACK and various types of stands, so you can set up the kit exactly the way you want.



Birch Custom Absolute (Blue Ice Sparkle)

■ Shells MAB1814H ■ Snare Drum NSD1047M ■ Hardware FP8500B CH755x4 CH750x2 CHH930 DS840 ■ Additional DTXP4 TP65x5 PCY65x2 HH65 SKRM100 ■ Rack HXR2L HXBCx4 HXTCx3 HXLRx3 HXACx2 HXCP23

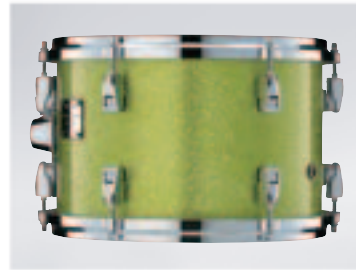
Color Finishes



Burgundy Sparkle(BGS) #57 **New**



Caramel Sparkle(CSK) #58 **New**



White Grape Sparkle(WGS) #59 **New**



Blue Ice Sparkle(BIS) #60 **New**



Midnight Sky Blue(MNB) #61 **New**



Deep Blue(DBU) #62 **New**



Luminous White Sparkle(LWS) #63 **New**



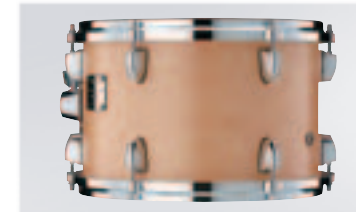
Solid Silver(SOS) #64 **New**



Matte Natural(MNT) #65 **New**

Luminous White Sparkle

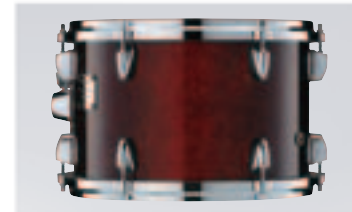
This newly developed Luminous White Sparkle appears to be a regular white sparkle under normal lighting. But be forewarned: Thanks to a special fluorescent coating, this spectacular finish glows in the dark. Even on a dark stage, your YAMAHA Absolute kit will establish its own unique territory!



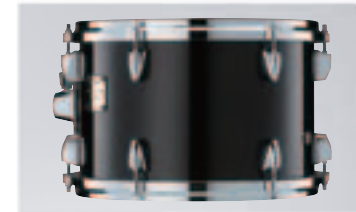
Vintage Natural(VN) #01



Vintage Black(VB) #02



Cherry Wood(CW) #04



Solid Black(SOB) #06



Silver Sparkle(SLS) #07



Black Sparkle(BLP) #08



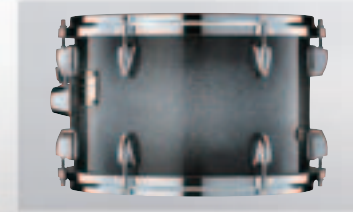
Red Pearl Natural(RPN) #09



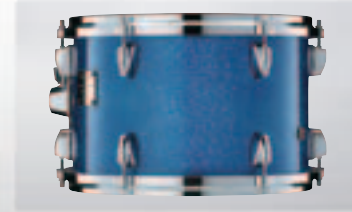
White Marine Pearl(WMP) #11



Apple Sparkle Fade(ASF) #28



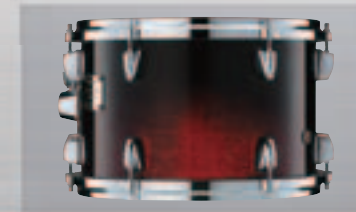
Black Sparkle Sunburst(BSS) #29



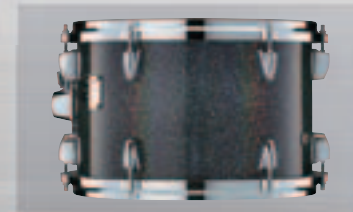
Blue Sparkle(BUP) #46



Red Sparkle(RDS) #47



Cherry Black Fade(CBF) #51



Midnight Sparkle(MNS) #52



Embossed Silver(ESL) #56

Snare Drum

For those who want to have the color-coordinated drum kit, color matching snare drums are lined up. The simple structure of the Absolute snare drum highlights the unique characteristics of maple and birch. Three different depths (7", 6" and 4") are available for the maple snare, and two depths (7" and 6") are available for the birch version. The Absolute Lug system—an important part of YAMAHA's reputation for performance—is also applied to these snare drums. Or, choose the excellent Hook Lug version for your new snare (6" depth only).



MAS1470



BAS1460H



MAS1440

Set Configuration

Maple Custom Absolute	Set No.	Bass Drum	Floor Tom	Mounted Tom		Hardware
Absolute Lug Models	MA2F2	MAB2218	MAF1615	-	-	TH945B
	MA2RF2	MAB2220R	MAF1615	-	-	-
	MA2RT2	MAB2218R	-	MAT1412	-	-
	MA0F2	MAB2016	MAF1413	-	-	TH945B
	MAT2	-	-	MAT1209	MAT1008	-

Maple Custom Absolute	Set No.	Bass Drum	Floor Tom	Mounted Tom		Hardware
New Hook Lug Models (Option)	MAH2F2	MAB2218H	MAF1615H	-	-	TH945B
	MAHT2	-	-	MAT1209H	MAT1008H	-

Birch Custom Absolute	Set No.	Bass Drum	Floor Tom	Mounted Tom		Hardware
Absolute Lug Models	BA2F2	BAB2218	BAF1615	-	-	TH945B
	BA2RF2	BAB2220R	BAF1615	-	-	-
	BA2RT2	BAB2218R	-	BAT1412	-	-
	BA0F2	BAB2016	BAF1413	-	-	TH945B
	BAT2	-	-	BAT1209	BAT1008	-

Birch Custom Absolute	Set No.	Bass Drum	Floor Tom	Mounted Tom		Hardware
New Hook Lug Models (Option)	BAH2F2	BAB2218H	BAF1615H	-	-	TH945B
	BAHT2	-	-	BAT1209H	BAT1008H	-

Specifications

Lug	Absolute Lug or New Hook Lug (Option)						
Hoop	Aluminum Die-cast						
BD Head	Front: Ebony PS3 with YAMAHA Logo, Batter: PS3 Clear (only 18"BD: Coated Ambassador)						
TT/FT Head	Top : Clear Emperor, Bottom : Clear Ambassador						
SD Head	Top : Coated Ambassador, Bottom : Snare Ambassador						
Tom Mount	New YESSIL-m mount						
Sound Holes	BD20"-24"	BD18"	FT	TT14"-16"	TT"13	TT8"-12"	SD
	10	8	6	4	2	1	1
Bearing Edge	45°R1						
BD Tension Bolt	T-Bolt						

Maple Custom Absolute															
Bass Drum															
24"				22"				20"				18"			
x18"		x16"		x20"		x18"		x16"		x18"		x16"		x14"	
MAB2418/H	MAB2418R/HR	MAB2416/H	MAB2220/H	MAB2220R/HR	MAB2218/H	MAB2218R/HR	MAB2216/H	MAB2018/H	MAB2018R/HR	MAB2016/H	MAB1814/H	MAB1814F/HF			

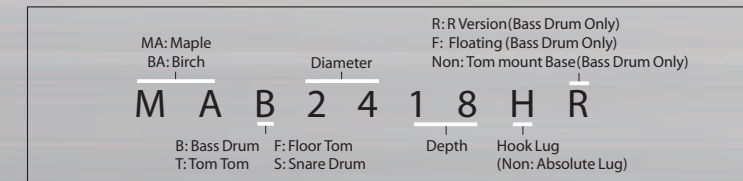
TOM TOM													
16"			x14"		13"			12"		10"		8"	
x14"		x13"	x12"	x11"	x10"		x9"	x9"	x8"	x8"	x7"	x7"	7"
MAT1614/H	MAT1613/H	MAT1412/H	MAT1411/H	MAT1310/H	MAT1309/H	MAT1209/H	MAT1208/H	MAT1008/H	MAT1007/H	MAT0807/H			

Floor TOM			Snare Drum			
18"		16"	14"		14"	
x16"		x15"	x13"		x4"	
MAF1816/H	MAF1615/H	MAF1413/H	MAS1470	MAS1460/H	MAS1440	

Birch Custom Absolute															
Bass Drum															
24"				22"				20"				18"			
x18"		x16"		x20"		x18"		x16"		x18"		x16"		x14"	
BAB2418/H	BAB2418R/HR	BAB2416/H	BAB2220/H	BAB2220R/HR	BAB2218/H	BAB2218R/HR	BAB2216/H	BAB2018/H	BAB2018R/HR	BAB2016/H	BAB1814/H	BAB1814F/HF			

TOM TOM													
16"			14"		13"			12"		10"		8"	
x14"		x13"	x12"	x11"	x10"		x9"	x9"	x8"	x8"	x7"	x7"	7"
BAT1614/H	BAT1613/H	BAT1412/H	BAT1411/H	BAT1310/H	BAT1309/H	BAT1209/H	BAT1208/H	BAT1008/H	BAT1007/H	BAT0807/H			

Floor TOM			Snare Drum			
18"		16"	14"		14"	
x16"		x15"	x13"		x6"	
BAF1816/H	BAF1615/H	BAF1413/H	BAS1470	BAS1460/H		



*Some models may not be available in some countries.
*Colors shown in this catalog may not be represented exactly as the original colors due to printing processes involved.
*Specifications are subject to change without notice.