

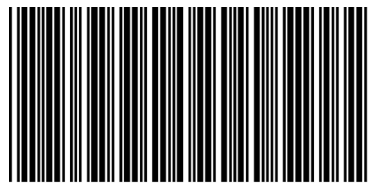


ARRANGER WORKSTATIONS



2020

PSR-SX900
PSR-SX700
PSR-SX600
PSR-A3000



P77025578

YAMAHA CORPORATION

*All photographs showing products on stands are for presentation purposes only.

English

THE NEXT LEVEL PSR-SX

Setting new standards in high-end Digital Workstation sound, design and user experience. The PSR-SX has been meticulously crafted to intensify your performance and enjoyment.



MUSIC WITHOUT COMPROMISE



INSPIRE AND BE INSPIRED

THE NEXT LEVEL: PSR-SX

Take your performance to a whole new dimension with the PSR-SX. Replacing the hugely successful PSR-S series, PSR-SX is the new generation in Digital Workstation sound, design and user experience. These instruments will inspire and intensify your musical performance and enjoyment.

PSR-SX9000



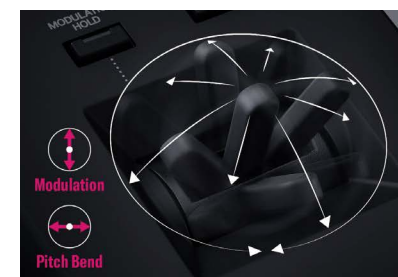
PSR-SX7000



POWERFUL FEATURES FOR LIVE PERFORMANCE

Joystick

The joystick offers intuitive pitch and modulation control. Now you can play rapid trills, dynamic pitch bends, and finely-nuanced modulation—all from a single, easily-configured controller.



FSB Keyboard

The new FSB Keyboard offers remarkable playability thanks to its heavier initial key resistance and greater key travel. The refined keyboard structure, with an adjusted fulcrum, allows you to play comfortably even on the backs of the keys whilst upgraded components suppress horizontal key movement.



High Quality Output

The audio output of the PSR-SX has been completely overhauled with focus on delivering the highest quality sound from your keyboard. The new Digital Audio Converter (DAC) provides high quality defined sound across a wide frequency range, ensuring the PSR-SX always cuts through the mix.

Style Section Reset

When playing Styles, easily jump to the beginning of the bar by pressing the [RESET/TAP TEMPO] button. A valuable feature for accompanying singers or performing music with varying time signatures.



GET INSPIRATION WITH THE SOUND

Voices & Styles

The PSR-SX has a comprehensive and sonically stunning set of authentic Voices, and accompaniment and rhythmic backing patterns (called "Styles") covering a wide range of musical genres. These let you play more naturally and with greater expressiveness, and single-handedly recreate the sound of a full band or orchestra.

Check out the demo video!

[VOICE OVERVIEW](#)



[STYLE OVERVIEW](#)



Keyboard Parts

There are four keyboard parts for your performance: LEFT, RIGHT 1, RIGHT 2 and RIGHT 3, and each part has one Voice. You can combine these parts by using the PART ON/OFF buttons to create rich instrument textures and convenient performance combinations.



Styles

Accompaniment and rhythmic backing patterns (called "Styles") covering a wide range of musical genres, including pop, jazz, and many more, let you single-handedly recreate the sound of a full band or orchestra.

Multi Pads

The Multi Pads can be used to play a number of short pre-recorded rhythmic and melodic sequences and loops that allow you to add impact and variety to your keyboard performance.

Audio Link Multi Pad

Multi Pads not only work with MIDI data, but also allow you to create unique, new pad content with your own audio (WAV) data that can be triggered during your performance.



CONTROL YOUR MUSIC

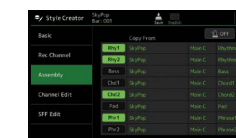
Touch Screen/GUI

The 7" touch display and new graphic user interface provide instinctive control over the instrument's powerful features.



Style Assembly

Styles are made up of many instrument parts, such as drums, bass, guitar, piano etc. In Style Assembly it's easy to explore, audition and combine parts from any Style to create your own personal accompaniments.



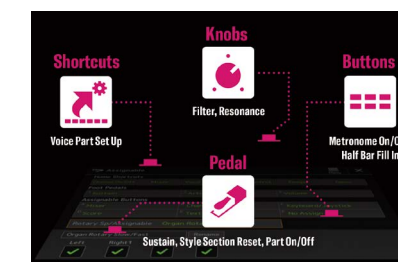
Playlist and Registration Memory

Playlist is the new convenient way to quickly set up the instrument. Organize Registration Memories into convenient Playlists for instant recall during performance. Playlist makes it easy to manage and call up your songs and the related settings, no matter how large your repertoire.



Assignable Function

While performing, you often need to act fast to access certain features. Choose from a range of functions to assign to one of six panel buttons, or to the Live Control knobs, pedals or the Home Shortcut menu, then instantly recall your desired function with a single touch.



[CHECK OUT THE FEATURE DEMOS!](#)



UNIQUE PSR-SX900 FEATURES

Expansive Soundfield Speakers

Polypropylene diaphragms with excellent response provides crisp, high-quality tone, while a new diaphragm structure delivers balanced sound throughout a broad listening area.



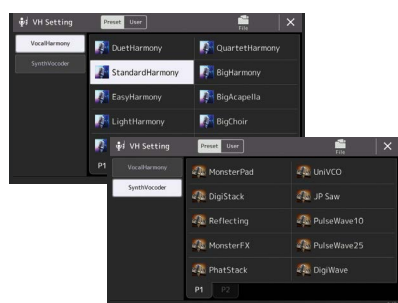
Sub Output

PSR-SX900 features two sub line-out connections that you can use to adapt your sound to various situations. Try routing bass through a separate subwoofer for a fuller, more powerful bottom end, or send parts and drum instruments to an external console to further shape your sound.



Vocal Harmony/Synth Vocoder

You can automatically apply various Vocal Harmony effects to your voice as you sing, or you can use the Synth Vocoder to graft the unique characteristics of your voice onto synthesizer and other sounds., for unusual machine-like or robotic effects, as well as unique choir sounds, which you can control through your own singing and playing.



Chord Looper

Chord Looper lets you record a chord sequence and play it back, freeing your left hand from playing chords and providing new ways to enhance your performance. Since the chords play back in a loop, you don't need to repeat the chord pattern manually anymore—letting you focus on your performance and other operations.



PSR-SX600



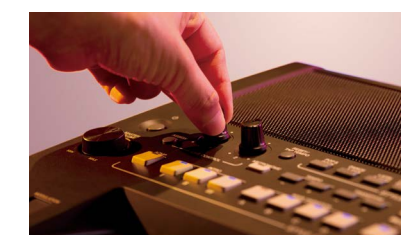
Unison & Accent



The powerful Unison and Accent functions provide you with expressive and nuanced

control over Style playback, letting you create various musical variations in the accompaniment. With the Unison function turned on, you can play a melody and have it reproduced in unison (i.e., the same melody is played by multiple instruments) or tutti (i.e., all parts are played at the same time)—expressively enhancing your performance and letting you create dynamic phrases. With the Accent function turned on, accents are automatically generated by adding notes to Style playback according to your playing strength (or accents you play). This allows you to temporarily change or interrupt the regular rhythm patterns.

Live Controls



The two LIVE CONTROL knobs can be assigned to various different functions, letting you

intuitively control your performance in real-time. For example, you can use the knobs to control the brightness (cutoff frequency) of the sound being played or to correct the tone or timbre of the sound with EQ — letting you easily add variations to the sound without interrupting your performance. You have total control over the performance for maximum creativity!

DSP Effect



DSP (Digital Signal Processor) features built into the PSR-SX600 provide high-quality effect

types, such as real distortion and reverb. You can also apply the DSP effects independently to specified parts, such as guitar, allowing you to play the keyboard dynamically with a distorted guitar sound, or sound like you are playing in a concert hall.

Rec'n'Share



Rec'n'Share allows you to record audio and video along with songs from your music library

and then share your performances with the world. It digitally enhances the way you practice, record and perform music.



THE INSTRUMENT THAT GROWS WITH YOU

PSR-A3000 is equipped with a Joystick for intuitive control of your performance and gives you real expressive sound. It also supports Yamaha Expansion Manager's Voice creation feature to make your own sounds and organise your content.

DIGITAL WORKSTATION

PSR-A3000

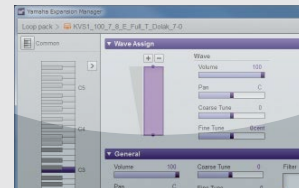
Oriental Voices and Drum kits inside



Expansion Content

Now you can make original Voices and Drum kits using Yamaha Expansion Manager and utilise 512MB of internal expansion memory! Simply prepare your own samples (.wav, .aif, .aiff, .sf2) and edit parameters on your computer using Yamaha Expansion Manager. You can create and share your original content with your friends!

You can pick the content from various Expansion Packs and form your original pack to install to your instrument. Yamaha Expansion Manager can be downloaded from the Yamaha website for free.



Voice/Drum kit edit

and form your original pack to install to your instrument. Yamaha Expansion Manager can be downloaded from the Yamaha website for free.

USB Audio & Audio Link Multi Pads

Whether you're enhancing a live performance with backing tracks from your music library, the time stretch, pitch shift, and vocal cancel of the USB audio player will add depth and versatility to any musical event. Audio Link Multi Pads let you link your own audio files (sound effects, vocal phrases, and so on), and trigger them from the pads as you perform.



Multi Pad

USB Audio Player

Drum Setup function

With Style Creator, you can edit various parameters of Drum Kits in detail, and you can merge your favourite "instrument" with various sounds from Drum Kits. Enjoy playing Styles with your unique kits!



Drum Setup display

Super Articulation Oriental Voices and Mono Legato function

New Oriental Super Articulation Voices will reproduce a real instrument's unique characteristics such as vibrato, tremolo, and many other. Even for non-Super Articulation Voices, there is new feature: "Mono Legato" that allows you to play trill phrase without using joystick, perfectly matched with Oriental string instruments! For all Voices, Scale Setting Buttons support any type of tuning.



Scale Tuning and Scale Setting Buttons

Joystick and Live Controls

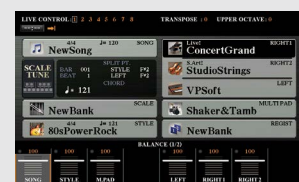
PSR-A3000 is equipped with a joystick which gives intuitive control of pitch and modulation. Now you can play with rapid trills, dynamic pitch bends, and finely-nuanced modulation, all from a single, easily-configured controller. Not only essential "Pitch Bend" and "Modulation" parameters, but also other settings, such as Filter, Track-Mute, and more can be assigned and changed in an instant. This feature will add another level to your performance. Add a unique flavour to your performance!



Joystick with assignable function

Colour Display

For simple intuitive control of the powerful features and capabilities of this advanced keyboard, PSR-A3000 comes equipped with a large color LCD that allows you to monitor the status of your instrument at a glance, and gives you easy access to valuable performance functions.



Voice & Style Expansion

Our world is getting smaller all the time. However, for PSR-SX and PSR-A3000, the musical world is expanding! Thanks to Yamaha's Voice & Style Expansion Packs, you can take advantage of a wide and ever-increasing selection of regional, ethnic and traditional Voices and Styles. Load them into the instrument and instantly play authentic sounds, rhythms and backings in the musical style of your choice!



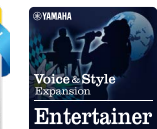
EUROPE "Best Of" Collection
Essentials from the 4 Packs Celtic, Latin, Balkan & Oriental.



MEXICO
You will enjoy playing traditional rhythms like Mariachi, Norteno or Corrido, in addition to Latin rhythms as Mambo, Son Cubano, Merengue and Bachata.



EURO DANCE
From very latest DubStep or Electro beats to House and HipHop grooves.



*Specifications and appearance are subject to change without notice

Yamaha Expansion Manager

Using a computer, Yamaha Expansion Manager expands the versatility of the instrument and is compatible with PSR-SX.

Tutorial Video on YouTube

Watch and Learn what Yamaha Expansion Manager can do!



Data Management

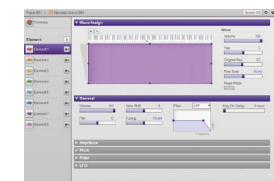
Have you ever wanted to install more than one Expansion Pack to your instrument at the same time? With Yamaha Expansion Manager, you can manage Voice, Style, Registration, and other contents, select your favourites and create a custom pack.

Organise Your Content

Firstly, import your favourite Pack Project files (.ppf file). Select Voices, Styles, and other data. Combine data from various packs and create a personal Pack Installation file (.ppi file). Install the Pack Installation file to your instrument via USB flash memory.

Voice Creation

Import your own recorded sample data (.wav, .aif, .aiff) or SoundFonts (.sf2). Build your own Voices by controlling various detailed parameters of the sound and create your unique Voice Pack! Using Yamaha Expansion Manager, you can import REX loop file, and use it as Multi Pad or Style performance.



EXCELLENT BASS FOR MUSIC PERFORMANCE

This compact subwoofer for keyboard instruments incorporates a number of advanced, high-performance bass technologies exclusive to Yamaha, including a Twisted Flare Port and Advanced YST II (Yamaha Active Servo Technology II). This results in sensationally clear bass response, and adds so much to your musical experience whether you're performing or listening.

KS-SW100



Subwoofer for keyboard instruments

- New Twisted Flare Port contributes to clear and tight bass
- Advanced YST II (Yamaha Active Servo Technology II)
- 20 cm (8") cone woofer
- Stylish addition to any room

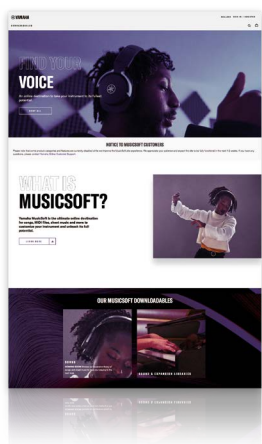


Yamaha MusicSoft

Thanks to Yamaha's new Voice & Style Expansion Packs for the PSR, players can take advantage of a wide selection of regional, ethnic and traditional Voices and Styles. Load them to your PSR and instantly play authentic sounds, rhythm and backing in the musical style of your choice!

<https://www.yamahamusicsoft.com/>

* Some applications are only available in certain regions.
* Specifications may be changed without notice.



Key Features List

- 61 Keys** Number of Keys: Indicates how many keys the keyboard of a specific model possesses.
- 930 Voices** Number of Voices: Indicates the number of instrument Voices.
- 230 Styles** Number of Styles: Indicates how many Styles of music you can call on to accompany your performance.
- USB Storage** USB Storage: Indicates that the model has a "USB TO DEVICE" terminal, allowing you to save your data using USB media.
- AUX IN** AUX IN: Indicates that the model has "AUX-IN" connection so that you can connect a Music Player and play along.
- PC Connectivity** PC Connectivity: Indicates that the model has a "USB TO HOST" terminal, allowing you to transfer music data to and from your PC.
- AUDIO PLAY/REC** AUDIO PLAY/REC: The model's USB Audio function allows you to play back WAV files (WAV and MP3 for PSR-SX900, PSR-SX700 and PSR-A3000) from a USB flash memory device and save your songs in WAV format for transfer to a PC to share with friends or create CDs.
- MIDI Connectivity** MIDI Connectivity: Indicates that the model has MIDI.
- Touch Display** Touch Display: Indicates that the model has Touch screen.
- Smart Chord** Smart Chord: Indicates that the model has the Smart Chord function.
- Rec'n'Share** Rec'n'Share: Indicates that the model has the Rec'n'Share function.
- SONG PLAY/REC** SONG PLAY/REC: The model plays back preset songs and commercially available MIDI files and allows you to record and save your own performances to the internal drive or USB flash memory as MIDI files.
- Expansion Packs** Expansion Packs: Indicates that you can add and enjoy packs of specific Voices and Styles of music.
- Mic/Guitar Input** Mic/Guitar Input: Indicates that the model has Microphone or Guitar input so you can connect these to your instrument.
- Color Display** Color Display: Indicates that the model has colour display.
- Vocal Harmony 2** Vocal Harmony 2: Indicates that the model has the Vocal Harmony 2 function.
- Synth Vocoder** Synth Vocoder: Indicates that the model has a Synth Vocoder.
- Audio Style** Audio Style: Indicates that the model has Audio Styles.
- SUB OUT** SUB OUT: Indicates that the model has SUB OUTPUT to adapt your sound to various situations.
- Chord Looper** Chord Looper: Indicates that the model has the Chord Looper function.
- Unison & Accent** Unison & Accent: Indicates that the model has the Unison & Accent function.

Specifications

Models		PSR-SX900	PSR-SX700	PSR-SX600	PSR-A3000	
Size and Weight	Dimensions [W x D x H]	1,017 x 431 x 139 mm	1,017 x 431 x 139 mm	1,004 x 410 x 134 mm	1,002 x 437 x 148 mm	
	Weight	11.5 kg	11.5 kg	8.1 kg	11.2 kg	
Color/Finish	Body	Black	Black	Black	Black and Metallic Dark Gray	
	Color	Black	Black	Black	Black and Metallic Dark Gray	
Interface	Keyboard	Number of Keys	61	61	61	61
		Type	Organ (FSB), Initial Touch	Organ (FSB), Initial Touch	Organ, Initial Touch	Organ
	Touch Response	Normal, Soft1, Soft2, Hard1, Hard2	Normal, Soft1, Soft2, Hard1, Hard2	Normal, Soft1, Soft2, Hard1, Hard2	Normal, Soft1, Soft2, Hard1, Hard2	Hard1, Hard2, Medium, Soft1, Soft2
		Pitch Bend Wheel	-	-	Yes	-
	Modulation Wheel	-	-	Yes	-	
		Joystick	Yes	Yes	-	Yes (Assignable)
	Multi Pads	Yes (with Audio Link)	Yes (with Audio Link)	Yes (with Audio Link)	Yes (with Audio Link)	Yes
		Knobs	2 (Assignable)	2 (Assignable)	2 (Assignable)	-
	Display	Type/Size	7 inch TFT Color Wide VGA LCD (Touch Screen)	7 inch TFT Color Wide VGA LCD (Touch Screen)	4.3 inch TFT Color WOVGA LCD	7 inch TFT Color Wide VGA LCD
		Language	English, German, French, Spanish, Italian	English, German, French, Spanish, Italian	English, German, French, Spanish, Italian, Japanese	English, German, French, Spanish, Italian
Panel	Language	English	English	English	English	
	Tone Generation	AWM Stereo Sampling	AWM Stereo Sampling	AWM Stereo Sampling	AWM Stereo Sampling	
Voices	Polyphony	Number of Polyphony (Max.)	128	128	128	128
		Preset	Number of Voices	1337 Voices + 56 Drum/SFX Kits	986 Voices + 41 Drum/SFX Kits + 480 XG Voices	850 Voices + 43 Drum/SFX Kits + 480 XG Voices
	Expandability	Expansion Voice	Yes (approx. 1 GB)	Yes (approx. 400 MB)	Yes (approx. 100 MB)	Yes (approx. 512 MB)
		Compatibility	XG (for Song playback), GS (for Song playback), GM, GM2	XG (for Song playback), GS (for Song playback), GM, GM2	XG (for Song playback), GM, GM2	XG, GS (for Song playback), GM, GM2
	Part	Right 1, Right 2, Right 3, Left	Right 1, Right 2, Right 3, Left	Right 1, Right 2, Left	Right 1, Right 2, Left	Right 1, Right 2, Left
		Reverb	59 Preset + 30 User	59 Preset + 30 User	52 Preset + 30 User	52 Presets + 3 User
	Chorus	106 Preset + 30 User	106 Preset + 30 User	106 Preset + 30 User	106 Presets + 3 User	106 Presets + 3 User
		DSP	322 Presets (with VCM) + 30 User	322 Presets + 30 User	295 Preset + 30 User	295 Presets + 10 User
	Effects	Insertion Effect	1-8: 322 Preset (with VCM) + 30 User	1-5: 322 Preset + 30 User	-	-
		Master Compressor	5 Preset + 30 User	5 Preset + 30 User	5 Preset + 30 User	5 Presets + 5 User
Master EQ	5 Preset + 30 User	5 Preset + 30 User	5 Preset + 30 User	5 Presets + 2 User	5 Presets + 2 User	
	Part EQ	28 Parts	28 Parts	27 Parts	27 parts	
Vocal Harmony	Number of Presets	Vocal Harmony: 54, Synth Vocoder: 20	-	-	-	
	Number of User Settings	Total 60	-	-	-	
Styles	Preset	Number of Preset Styles	525	400	415	400
		Featured Styles	463 Pro, 46 Session, 6 Free Play, 10 DJ	353 Pro, 34 Session, 3 Free Play, 10 DJ	372 Pro Styles, 32 Session Styles, 10 DJ Styles, 1 Free Play	380 Pro, 10 Session, 10 DJ
	Fingering	Single Finger, Fingered, Fingered On Bass, Multi Finger, AI Fingered, Full Keyboard, AI Full Keyboard	Single Finger, Fingered, Fingered On Bass, Multi Finger, AI Fingered, Full Keyboard, AI Full Keyboard	Single Finger, Fingered, Fingered On Bass, Multi Finger, AI Fingered, Full Keyboard, AI Full Keyboard	Single Finger, Fingered, Fingered On Bass, Multi Finger, AI Fingered, Full Keyboard, AI Full Keyboard	Single Finger, Fingered, Fingered On Bass, Multi Finger, AI Fingered, Full Keyboard, AI Full Keyboard
		Style Control	INTRO x 3, MAIN VARIATION x 4, FILL x 4, BREAK, ENDING x 3	INTRO x 3, MAIN VARIATION x 4, FILL x 4, BREAK, ENDING x 3	INTRO x 3, MAIN VARIATION x 4, FILL x 4, BREAK, ENDING x 3	INTRO x 3, MAIN VARIATION x 4, FILL x 4, BREAK, ENDING x 3
	Compatibility	Style File Format (SFF), Style File Format GE (SFF GE)	Style File Format (SFF), Style File Format GE (SFF GE)	Style File Format (SFF), Style File Format GE (SFF GE)	Style File Format (SFF), Style File Format GE (SFF GE)	Style File Format (SFF), Style File Format GE (SFF GE)
		Expandability	Expansion Style	Yes	Yes	Yes
	Other Features	Music Finder (Max.)	-	-	-	1,200
		One Touch Setting (OTS)	4 for each Style	4 for each Style	4 for each Style	4 for each Style
	Chord Looper	Yes	Yes	Yes	Yes	
		Style Section Reset	Yes	Yes	Yes	Yes
Unison & Accent	Yes	Yes	Yes	Yes		
	Yes	Yes	Yes	Yes		
Songs (MIDI)	Preset	Number of Preset Songs	5 preset sample Songs	5 preset sample Songs	3 preset sample Songs	4 preset sample Songs
		Number of Tracks	16	16	16	16
	Recording	Data Capacity	approx. 3 MB/Song	approx. 3 MB/Song	approx. 1 MB/Song	approx. 300 KB/Song
		Recording Function	Quick Recording, Multi Track Recording, Step Recording	Quick Recording, Multi Track Recording, Step Recording	Quick Recording, Multi Track Recording	Quick Recording, Multi Track Recording
	Data Format	Playback	SMF (Format 0 & 1), XF	SMF (Format 0 & 1), XF	SMF (Format 0 & 1), XF	SMF (Format 0 & 1), XF
		Recording	SMF (Format 0)	SMF (Format 0)	SMF (Format 0)	SMF (Format 0)
	Voices	Harmony/Echo	Yes	Yes	Yes	Yes
		Panel Sustain	Yes	Yes	Yes	Yes
	Mono/Poly	Yes	Yes	Yes	Yes	
		Arpeggio	Yes	Yes	Yes	Yes
Styles	Style Creator	Yes	Yes	Yes	Yes	
	Song Creator	-	-	Yes	Yes	
Songs	Score Display Function	Yes	Yes	Yes	Yes	
	Lyrics Display Function	Yes	Yes	Yes	Yes	
Text Display Function	Yes	Yes	Yes	Yes		
	Wallpaper Customization	Yes	Yes	-	Yes	
Lesson/Guide	Follow Lights, Any Key, Karao-Key, Your Tempo	Follow Lights, Any Key, Karao-Key, Your Tempo	Follow Lights, Any Key, Karao-Key, Your Tempo	Follow Lights, Any Key, Karao-Key, Your Tempo	Follow Lights, Any Key, Karao-Key, Your Tempo	
	Multi Pad Creator	Yes	Yes	Yes	Yes	
Registration Memory	Number of Buttons	8	8	8	8	
	Control	Registration Sequence, Freeze	Registration Sequence, Freeze	Registration Sequence, Freeze	Registration Sequence, Freeze	
Functions	Playlist	Number of Records	2,500 (max.) Records per Playlist file	2,500 (max.) Records per Playlist file	500 (max.) Records per Playlist file	-
		Recording Time (Max.)	80 minutes/Song	80 minutes/Song	80 minutes/Song	80 minutes/Song
Audio Recorder/Player	Recording	WAV (44.1 kHz, 16 bit, stereo), MP3 (44.1 kHz, 128/256/320 kbps, mono/stereo)	WAV (44.1 kHz, 16 bit, stereo), MP3 (44.1 kHz, 128/256/320 kbps, mono/stereo)	*Only on USB WAV (44.1 kHz, 16 bit, stereo)	WAV (44.1kHz, 16bit, stereo)	
		WAV (44.1 kHz, 16 bit, stereo), MP3 (44.1/48.0 kHz, 64-320 kbps and variable bit rate, mono/stereo)	WAV (44.1 kHz, 16 bit, stereo), MP3 (44.1/48.0 kHz, 64-320 kbps and variable bit rate, mono/stereo)	*Only on USB WAV (44.1 kHz, 16 bit, stereo)	WAV (44.1kHz, 16bit, stereo), MP3 (44.1/48.0 kHz, 64-320 kbps and variable bit rate, mono/stereo)	
Playback	WAV (44.1 kHz, 16 bit, stereo), MP3 (44.1/48.0 kHz, 64-320 kbps and variable bit rate, mono/stereo)	WAV (44.1 kHz, 16 bit, stereo), MP3 (44.1/48.0 kHz, 64-320 kbps and variable bit rate, mono/stereo)	*Only on USB WAV (44.1 kHz, 16 bit, stereo)	WAV (44.1kHz, 16bit, stereo), MP3 (44.1/48.0 kHz, 64-320 kbps and variable bit rate, mono/stereo)		
	Metronome	Yes	Yes	Yes	Yes	
Tempo Range	5 - 500, Tap Tempo	5 - 500, Tap Tempo	5 - 500, Tap Tempo	5 - 500		
	Transpose	-12 - 0 - +12	-12 - 0 - +12	-12 - 0 - +12	-12 - 0 - +12	
Overall Controls	Tuning	414.8 - 440 - 466.8 Hz	414.8 - 440 - 466.8 Hz	414.8 - 440 - 466.8 Hz	414.8 - 440.0 - 466.8 Hz	
	Octave Button	Yes	Yes	Yes	Yes	
Scale Type	9 Types	9 Types	9 Types	9 Types	9 Types, Scale Tuner buttons, Scale Memory	
	Bluetooth	Yes (Audio) *May not have this functionality depending on the country	-	-	-	
Miscellaneous	Direct Access	Yes	Yes	Yes	Yes	
	Internal Memory	approx. 4 GB	approx. 1 GB	approx. 20 MB	approx. 13 MB	
Storage	External Drives	USB Flash Drive	USB Flash Drive	USB Flash Drive	USB Flash Drive	
	Headphones	Standard stereo phone jack	Standard stereo phone jack	Standard stereo phone jack	Standard stereo phone jack	
Microphone	Yes	Yes	Yes	-		
	MIDI	IN/OUT	IN/OUT	-	IN/OUT	
AUX IN	Stereo mini jack	Stereo mini jack	Stereo mini jack	Stereo mini jack		
	LINE OUT	MAIN OUTPUT (L/L+R, R), SUB (AUX) OUTPUT (1,2 (L/L+R, R))	MAIN OUTPUT (L/L+R, R)	MAIN OUTPUT (L/L+R, R)	MAIN OUTPUT (L/L+R, R)	
Connections	Display Output to External Monitor	Yes (by using a commercially available USB display adaptor) *For a list of compatible devices, access the "Yamaha Downloads" website.	-	-	-	
	FOOT PEDAL	1 (SUSTAIN), 2 (ARTICULATION 1), Function Assignable	1 (SUSTAIN), 2 (ARTICULATION 1), Function Assignable	1 (SUSTAIN), 2 (UNISON), Function Assignable	1 (SUSTAIN), 2 (ARTICULATION 1), Function Assignable	
Amplifiers and Speakers	USB TO DEVICE	Yes (x 2)	Yes	Yes	Yes	
	USB TO HOST	Yes	Yes	Yes	Yes	
Amplifiers	(15 W + 10 W) x 2	15 W x 2	15 W x 2	15 W x 2	15 W x 2	
	13 cm x 2 + 2.5 cm (dome) x 2	13 cm x 2 + 5 cm x 2	12 cm x 2	(13 cm + 5 cm) x 2		

* All photographs showing products on stands are for presentation purposes only.

* Availability of models may vary from country to country.

* All trademarks and registered trademarks are the property of their respective owners.